

## Instructions for the "Temp Logger" for Android

<b>Status</b>	<input type="checkbox"/> Draft	<input type="checkbox"/> Review	<input checked="" type="checkbox"/> Publish	<input type="checkbox"/> Revise
<b>Version</b>	1.0			
<b>Author</b>	Lisa、 Daisy	<b>Date</b>	2020.9.17	

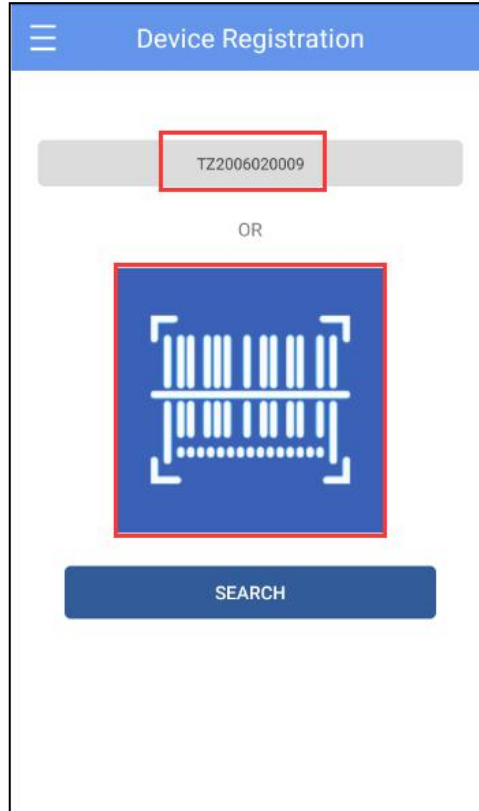
"Temp Logger" is a free application for users developed by Tzone. This App can connect to TempU06+ via Bluetooth, and it can be used to configure TempU06+ for data transfer and recording. Through the Bluetooth Low Energy (BLE), you can use an Android smartphone to monitor temperature and humidity.

A client can download the APP by scanning the QR code below:

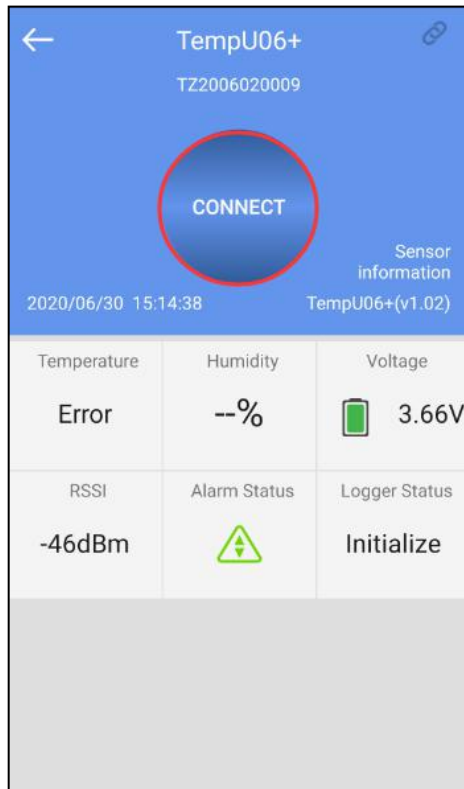


# 1. Device Registration

1.1 Open the APP, enter the device ID directly to register on the homepage, or scan the QR code through the smartphone camera to obtain the device ID. Then click SEARCH:

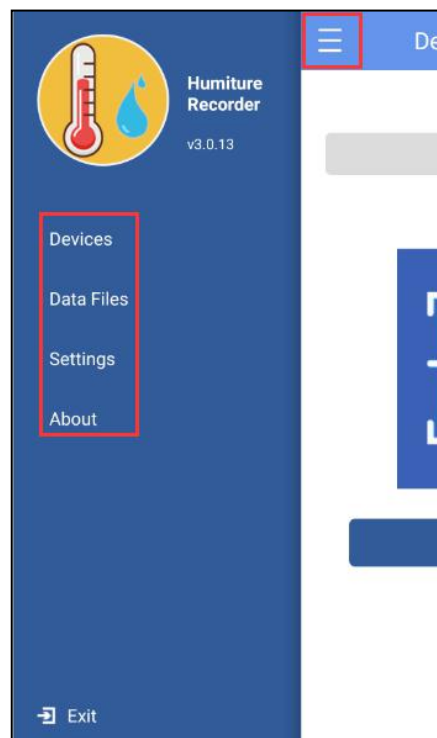


1.2 Jump to the device connection page and click connect. After a successful connection, the device ID will appear on the "Devices" page, indicating that the device has been successfully registered:



## 2. Menu bar

Click the icon in the upper left corner of the home screen to expand the main menu, and you can select a menu item:

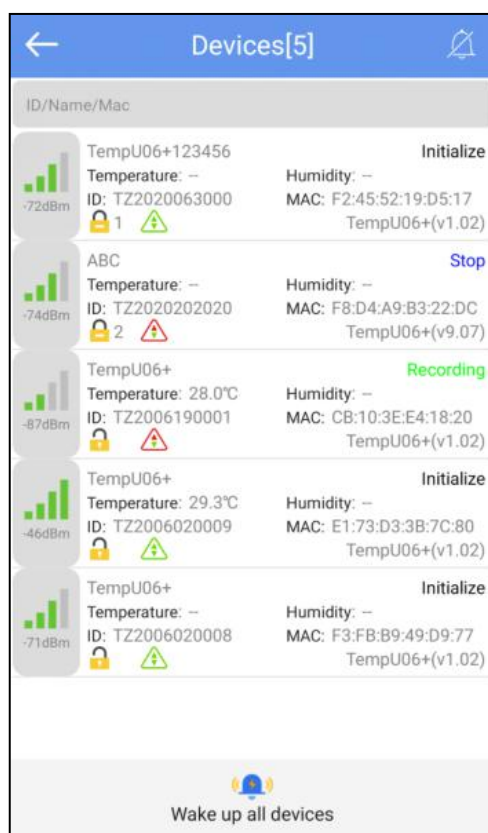


## 2.1 Device

After clicking the "Devices" button, you will jump to the multi-device interface. The functions of the device interface are listed below.

### 2.1.1 View device information:

The name, ID, MAC, temperature data, model, and status of all the current devices can be viewed, or you can view the specific device information by ID, name, and MAC.



Status description of the device in different symbols:



: Unlock



: Level-1 access key



: Level-2 access key



: High temperature alarm



: Low temperature alarm



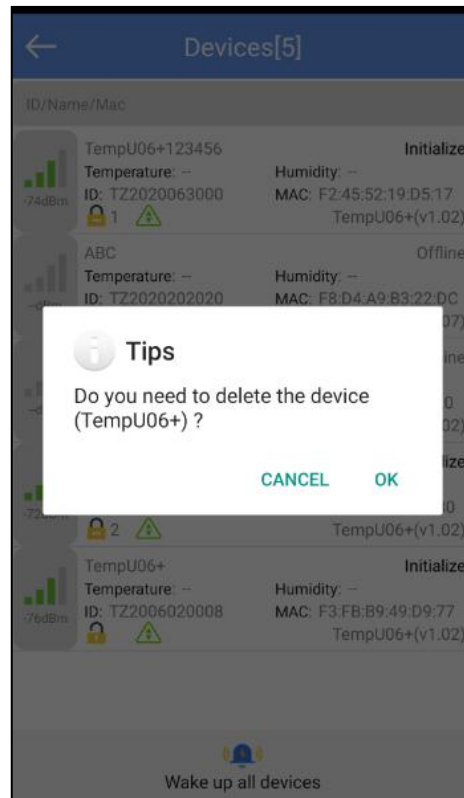
: Temperature alarm (including both high and low temperatures)



: Connect the device to the computer (if the device has been already connected to the computer, the APP cannot be connected to the device.)

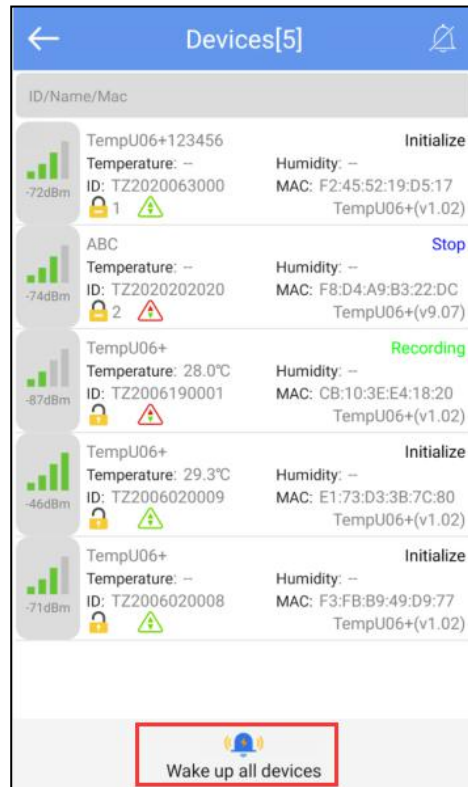
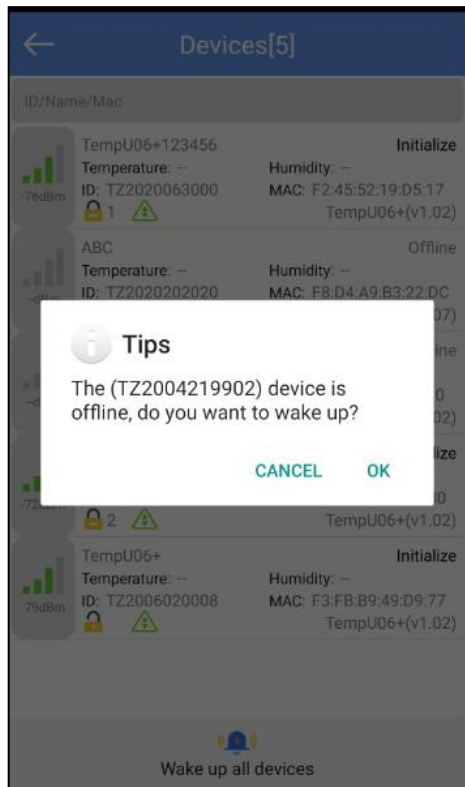
### 2.1.2 Delete the device:

Long press to delete the device:



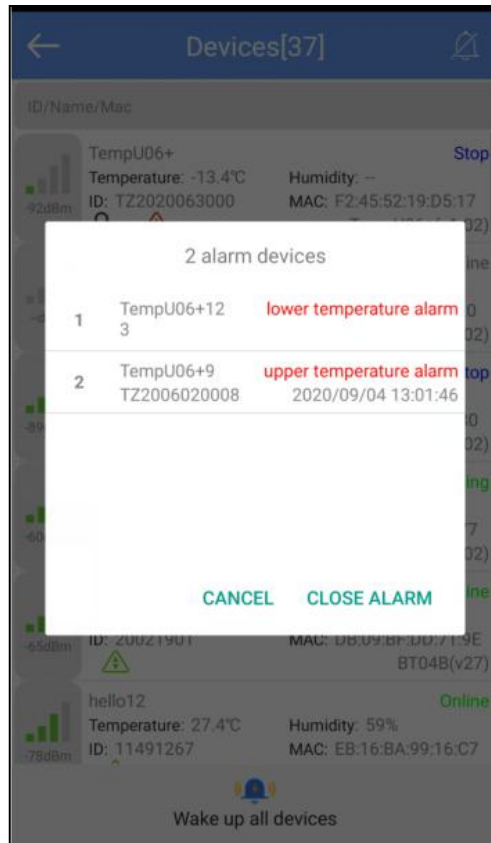
### 2.1.3 Specific device wake-up and all devices wake-up functions:

When the device is offline, click the device quickly to wake up the specific device, and click "Wake up all devices" to wake up all devices:



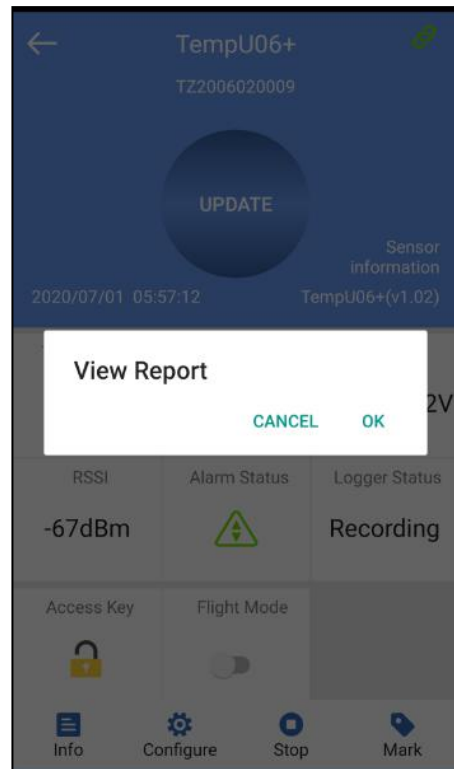
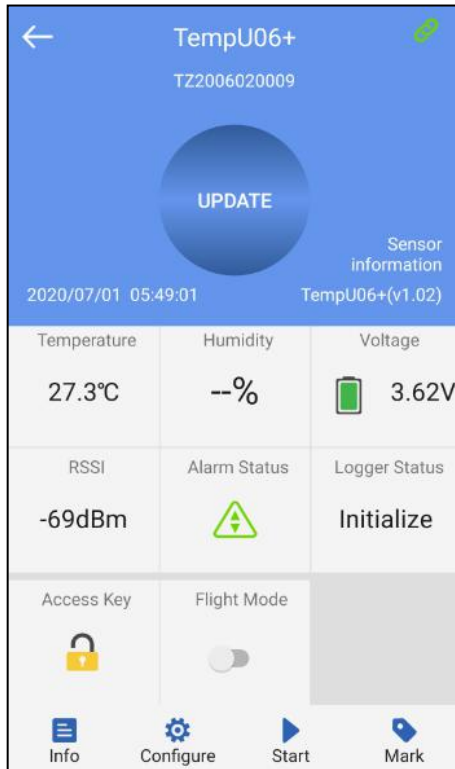
#### 2.1.4 Device alarm:

When the device exceeds the preset upper or lower limit, every time you enter the "Select device," the alarm information will be displayed, and the alarm bell will ring. Click "CANCEL" to close the alarm information. Clicking "CLOSE ALARM" will close the alarm information and alarm bell.



### 2.1.5 Device connection

Click a specific device quickly to jump to the connection interface. It will display the temperature, voltage, RSSI, alarm status and logger status of the device. Click "CONNECT," and it will jump to update after 100% success is achieved, indicating that the device has successfully connected and read the present data. After the connection is successful, it will prompt you if you want to view the report, and the device access key and flight mode function will be added. Four buttons will be displayed at the bottom of the interface:



Note: The device will not update the data during the connection process. Instead, the device will be disconnected after 5 minutes by default, and the four buttons at the bottom will become gray and cannot be clicked anymore.

#### 2.1.5.1 Device access key

Click "Access Key" to encrypt the device, and set the level-1 and level-2 access keys.

#### 2.1.5.2 Flight mode

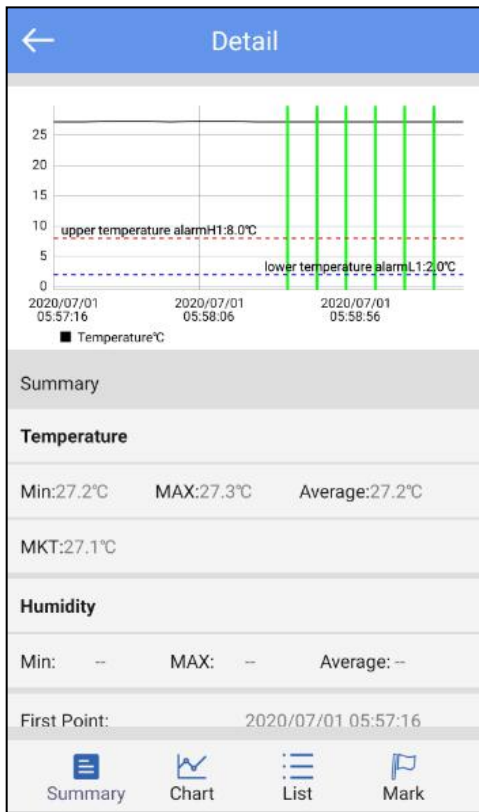
Click "Flight Mode" and the device will enter flight mode and stop sending broadcast data on the multi-device interface. Long press the Start and Stop buttons for 3s at the same time, and the device will exit flight mode.

#### 2.1.5.3 Detail and mail function

Click "Detail" to view all information reports of the device. Click "EXPORT" to generate PDF and CSV reports, and send the reports to the specific mailbox by email.



# 1. Detail summary



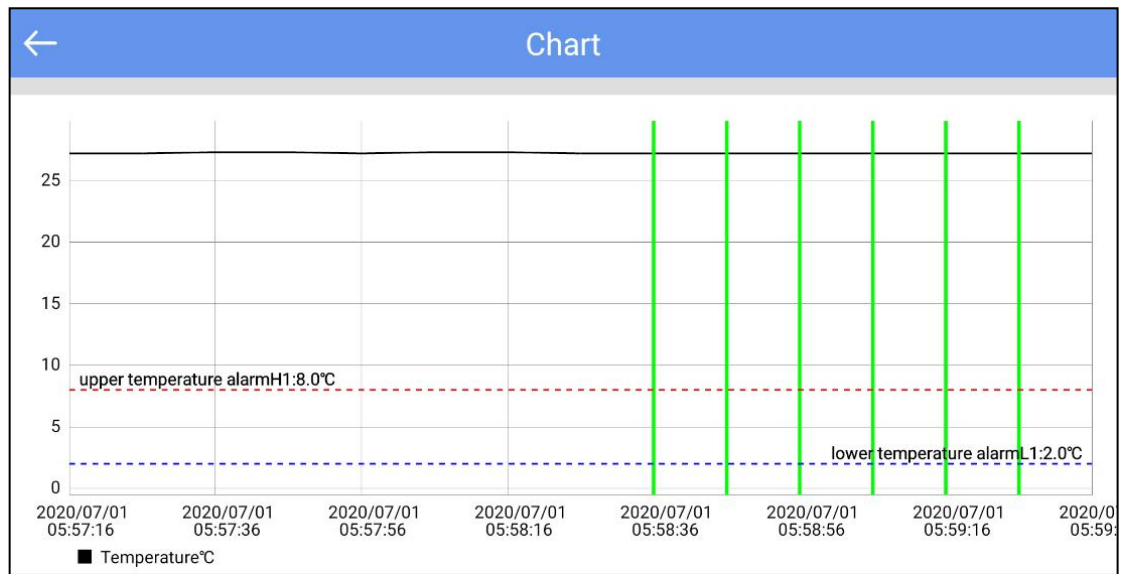
First Point:	2020/07/01 05:57:16
Stop Time:	2020/07/01 05:59:36
Trip Length:	00h 02m 20s
Number of Points:	15
<b>Device Info</b>	
Device Name:	TempU06+
ID:	TZ2006020009
MAC:	E1:73:D3:3B:7C:80
Firmware Version:	1.02
<b>Alarms</b>	
Alarm Condition	No. of Violations
H2	

<b>Alarms</b>		
Alarm Condition	No. of Violations	Status
H2		
H1: Over 8.0°C	1	OK
L1: Below 2.0°C	0	OK
L2		
<b>Report Information</b>		
Start Delay:	00h 00m 00s	
Log Interval:	00h 00m 10s	
Start Mode:	APP Start	
Stop Mode:	Recording	
Description:		

L1: Below 2.0°C	0	OK
L2		
<b>Report Information</b>		
Start Delay:	00h 00m 00s	
Log Interval:	00h 00m 10s	
Start Mode:	APP Start	
Stop Mode:	Recording	
Description:	Temperature Recorder	
<b>EXPORT</b>		

Note: The smartphone must have a mailbox APP and login account to send email.

2. Chart:



3. List:

NO.	DateTime	Temperature	Humidity
1	2020/07/01 05:57:16	27.2°C	--
2	2020/07/01 05:57:26	27.2°C	--
3	2020/07/01 05:57:36	27.3°C	--
4	2020/07/01 05:57:46	27.3°C	--
5	2020/07/01 05:57:56	27.2°C	--
6	2020/07/01 05:58:06	27.3°C	--
7	2020/07/01 05:58:16	27.3°C	--
8	2020/07/01 05:58:26	27.2°C	--
9	2020/07/01 05:58:36	27.2°C	--
10	2020/07/01 05:58:46	27.2°C	--
11	2020/07/01 05:58:56	27.2°C	--
12	2020/07/01 05:59:06	27.2°C	--
13	2020/07/01 05:59:16	27.2°C	--
14	2020/07/01 05:59:26	27.2°C	--
15	2020/07/01 05:59:36	27.2°C	--

4. Mark:


← Mark			
NO.	Type	Description	DateTime
1		Mark	2020/07/01 05:58:36
2		Mark	2020/07/01 05:58:46
3		Mark	2020/07/01 05:58:56
4		Mark	2020/07/01 05:59:06
5		Mark	2020/07/01 05:59:16
6		Mark	2020/07/01 05:59:26

#### 2.1.5.4 Configure device

Before start recording, you can click "Configure" to set the device.

← + Configure Device

TempU06+ TZ2006020009

Device Name: TempU06+ 

Configuration Profile

Please select configuration profile >

Temperature unit

°C  °F

Basic Settings


Logging Interval: 00 ▾ H 10 ▾ m 00 ▾ s

Logging Cycle: 222 Day

Start Delay: 00 ▾ H 30 ▾ m 00 ▾ s

Startup Mode: Press Button >

Advanced Settings

 Save

← + Configure Device

mode:

Advanced Settings

Disable Stop Button:

Repeat Start:

Access Key OFF >

Alarms


Alarms Alarm Setting >

PDF Report

Data Format: MM/DD/YY HH:MM:SS >

Description

Temperature Recorder

 Save

1. Device name: The device name (the max is no more than 15 bytes) can be named by users. The "Camera" on the right can scan the ID of the device .
2. Configuration profile: The configuration information can be saved via click the "+" button which in the upper right corner of the configure page. You also can choose the saved configuration information for configuring.
3. Temperature unit: You can choose Celsius or Fahrenheit.
4. Basic settings:
  - (1)Logging interval: Record time of the stored data (range:10s~18h, default:10mins).
  - (2)Logging cycle: It changes with the logging interval.
  - (3)Start delay: Delay time of the stored data (range: 0s~4.23h, default:30mins)
  - (4)Startup mode: You can choose two start modes, namely, "press the button to start" or "timing start" (default: press the button to start).
- 5.Advanced settings
  - (1)Disable the stop button: You can choose "disable the stop button" or "cannot disable the stop button" (default: disable stop button).
  - (2)Repeat start: You can choose "repeat start" or "cannot repeat start" (default: cannot repeat start).
  - (3)Access key: You can choose to turn it on or off. The access key system has two levels. At level 1, the report can be viewed without the need to enter the access key; at level 2, the information can be viewed only after entering the access key (default: the access is turned off);
- 6.Alarms: You can choose to turn off or turn on the alarm. (default: turn off alarm)
  - (1)Alarm setting: The alarm type, alarm delay, and temperature value can be set (only the alarm settings of H1 and L1 are turned on by default. There is only one alarm type. The alarm delay is 10 mins, and the temperature range is 2°C~8°C).

Note: H1 and L1 must be set at the same time. If H2 or L2 is set, H1 and L1 must be turned on at the same time.
7. PDF report:

Data format: MM/DD/YY HH:MM:SS or DD/MM/YY HH:MM:SS (default: MM/DD/YY HH:MM:SS)
- 8.Description: You can set a description for this device (max 55 characters, default: Temperature Recorder).

#### 2.1.5.5 Start or stop

You can set whether the device starts or stops through the APP.

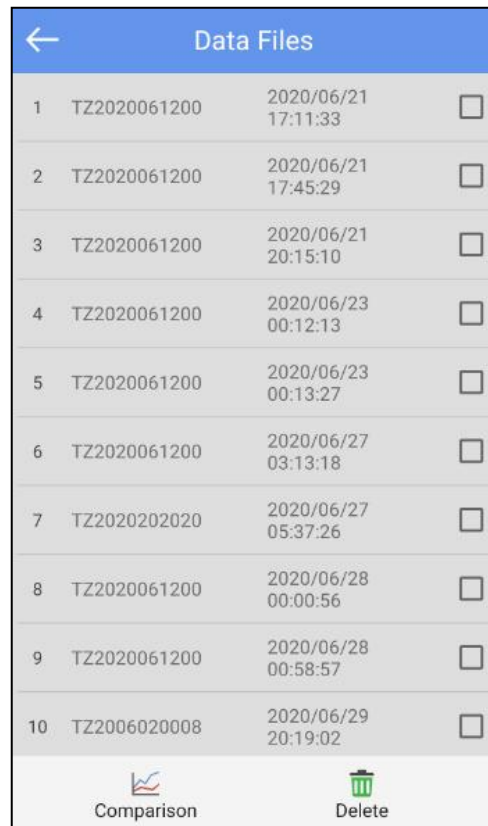
#### 2.1.5.6 Mark

Click to mark the current time and temperature value of the device (max: mark 6

times).

## 2.2 Data files

Click the "Data Files" menu bar to jump to the data files interface. The functions of this device interface are listed below:



1	TZ2020061200	2020/06/21 17:11:33	<input type="checkbox"/>
2	TZ2020061200	2020/06/21 17:45:29	<input type="checkbox"/>
3	TZ2020061200	2020/06/21 20:15:10	<input type="checkbox"/>
4	TZ2020061200	2020/06/23 00:12:13	<input type="checkbox"/>
5	TZ2020061200	2020/06/23 00:13:27	<input type="checkbox"/>
6	TZ2020061200	2020/06/27 03:13:18	<input type="checkbox"/>
7	TZ2020202020	2020/06/27 05:37:26	<input type="checkbox"/>
8	TZ2020061200	2020/06/28 00:00:56	<input type="checkbox"/>
9	TZ2020061200	2020/06/28 00:58:57	<input type="checkbox"/>
10	TZ2006020008	2020/06/29 20:19:02	<input type="checkbox"/>

Comparison Delete

### 2.2.1 View a single data file

The file shows the time when the device data is first read, and the information will be updated after reading until the machine stops recording.

### 2.2.2 Support up to 5 data files for graph report comparison

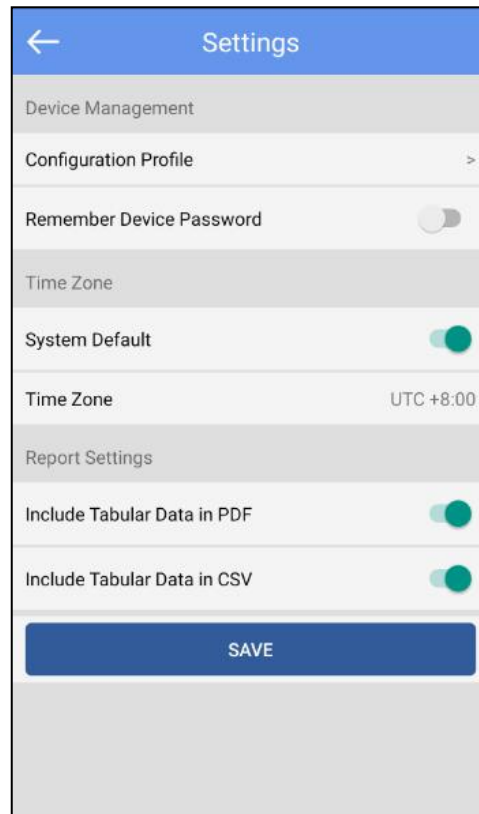
Check the data file and click "Comparison" to compare the temperature chart reports of different data files.

### 2.2.3 Delete data file

Check the data file and click "Delete" to delete the data file.

## 2.3 System setting

Click the "System setting" menu bar to jump to the system setting interface. The functions of the system setting interface are listed below.



### 2.3.1 Device management

1. Configuration file: You can view the configuration file saved in "Configure".
2. Remember the device access key: You can choose whether or not to remember the device access key. If not, every time you connect to the device, you need to enter the access key; if yes, just enter the access key once, and the access key will be stored on the device (default: remember the access key).

### 2.3.2 Time zone

1. System and time zone: You can choose the system default or manually choose the time zone (default: system default).

### 2.3.3 Report settings

1. Include Tabular Data in PDF: You can choose whether or not to include Tabular Data (default: include).

2. Include Tabular Data in CSV: You can choose whether or not to include Tabular Data (default: include).

## 2.4 About

APP version and company information:

