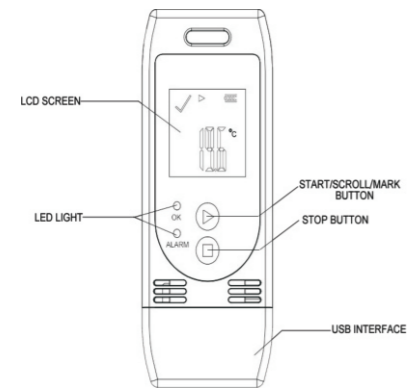


**Multi-Use USB Temp&RH Data Logger
User Manual**



Product Introduction

The device is mainly used to monitor the temperature and humidity of food, medicine, and other products during storage and transportation. After recording, insert it into the USB port of PC, it will automatically generate reports without any driver.

Main Features

- Multi-use temperature & humidity measuring and recording
- Widely measuring range, high accuracy and large data memory
- Statistics available on LCD screen
- No software needed to generate PDF and CSV report
- Parameter programmable by configure software

Specification

Item	Parameter
Temp Scale	°C or °F
Accuracy	±3%RH;±0.5°C(-20°C ~+40°C), ±1.0°C (other)
Range	-30°C ~ 60°C;0%~85%RH
Resolution	0.1
Capacity	32,000 readings
Startup Mode	Button or software
Interval	Optional Default: 10 mins
Start Delay	Optional Default: 30 mins
Alarm Delay	Optional Default: 10 mins
Alarm Range	Optional Default: <2°C or >8°C, <40%RH or >80%RH
Shelf Life	1 year (replaceable)
Report	Automatic PDF and CSV
Time Zone	UTC +0:00 (Default)
Dimension	89mm*36mm*16mm

How to use

a. Start Recording

Press and hold the "▶" button for more than 3s until the "OK" light is on and the "▶" or "WAIT" displays on the screen, which indicates the logger is started.

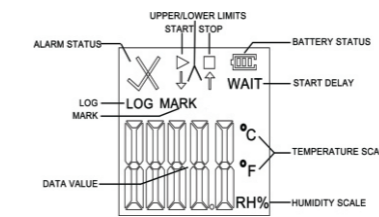
b. Mark

When the device is recording, press and hold the "▶" button for more than 3s, and the screen will switch to the "MARK" interface. The number of "MARK" will increase by one, indicating data was marked successfully. (Note: One record interval can mark one time only, the logger can mark 6 times in one recording trip. Under status of start delay, the mark operation is disabled.)

c. Stop Recording

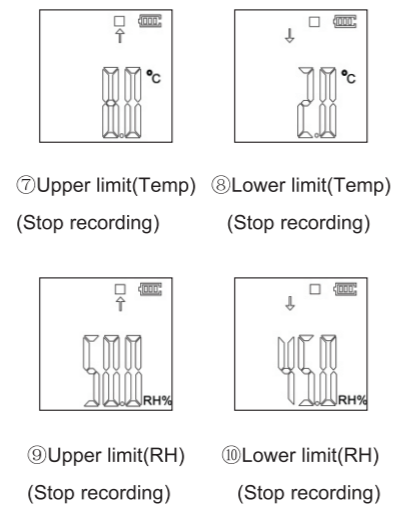
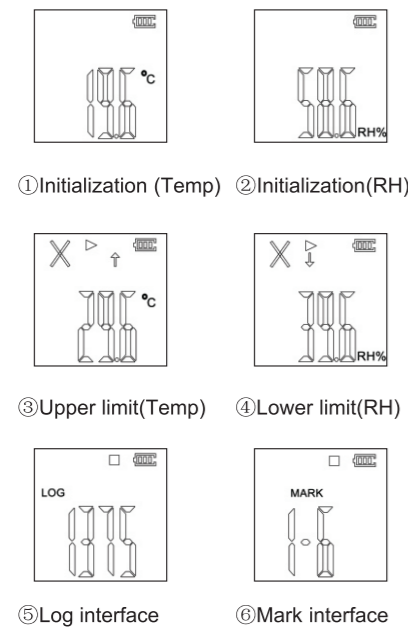
Press and hold the "■" button for more than 3s until the "ALARM" light is on, and the "■" displays on the screen, indicating stopping recording successfully. (Note: If the logger is stopped during the status of start delay, a PDF report generated when inserted into PC but without data.)

LCD Display Instruction



During normal recording process, shortly press "▶" to switch to different display interface. The interfaces shown in sequence are respectively:
Real-time Temperature Interface → Real-time Humidity Interface → LOG Interface → MARK Interface → Temperature Upper Limit Interface → Temperature Lower Limit Interface → Humidity Upper Limit Interface → Humidity Lower Limit Interface.
Note:

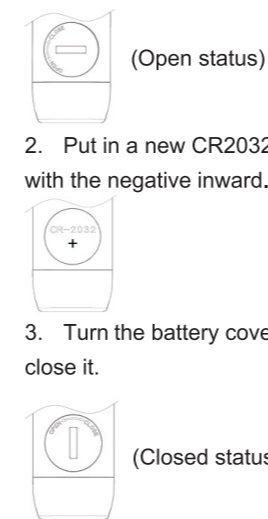
- a. If the device is used for the first time or after re-configuration, the real-time temperature interface will be the initialization interface.
- b. Real-time temperature and humidity interface is update every 10s.



▶	Data logger is recording
■	Data logger has stopped recording
WAIT	Data logger is in the status of start delay
√	Temperature and humidity is within the limited range
"X" and "↑" light	Measured temperature and humidity exceeds its upper limit
"X" and "↓" light	Temperature and humidity exceeds its lower limit

Battery Replacement

1. Turn the battery cover counterclockwise to open it.
2. Put in a new CR2032 button battery, with the negative inward.
3. Turn the battery cover clockwise to close it.



Battery Status Indication

Battery	Capacity
	Full
	Good
	Medium
	Low (please replace battery)

Precautions

1. Please read the manual carefully before using the logger.
2. It is recommended to check the battery status before restarting the logger to ensure that the remaining battery capacity could finish the recording task.
3. The LCD screen will be off after 10 seconds of inactivity. Please press the "▶" button to lighten it.

4. Never dismantle the battery. Do not remove it if the logger is running.
5. Replace old battery with a new CR2032 button cell with the negative inward.