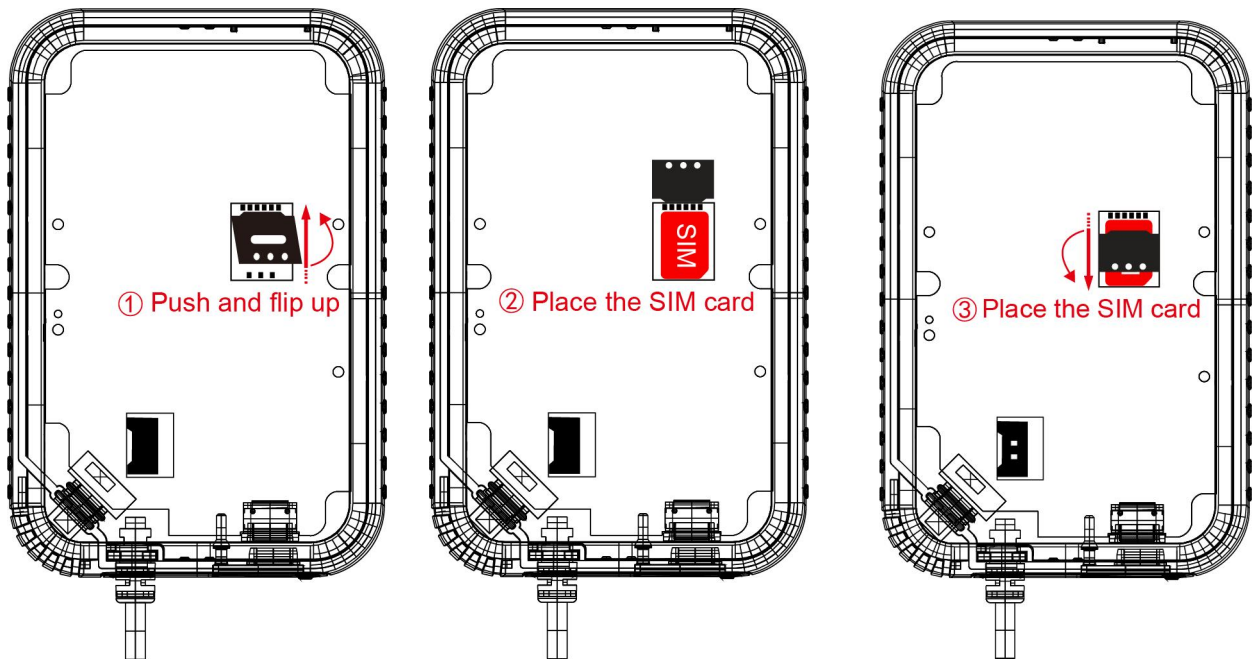


TT19 Quick Setup Use Manual V1.0

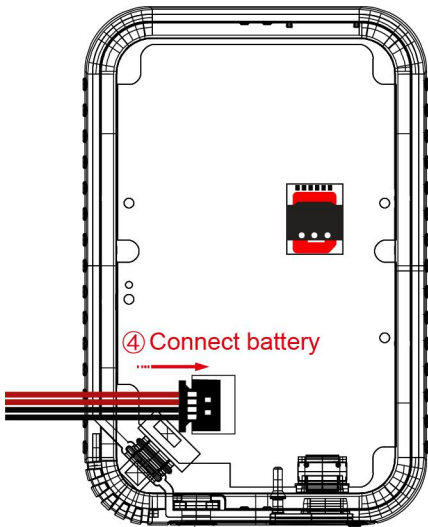
Steps how to run the device easily.

Note: If the device you purchased already has a card and battery plugged, please ignore **steps 1, 2, and 3**

Step1: After getting the machine, the user needs to insert the SIM card first, as shown in the figure below:



Step2: Plug the battery, as shown in the figure below:



Step3: Install the shell and lock the screws.

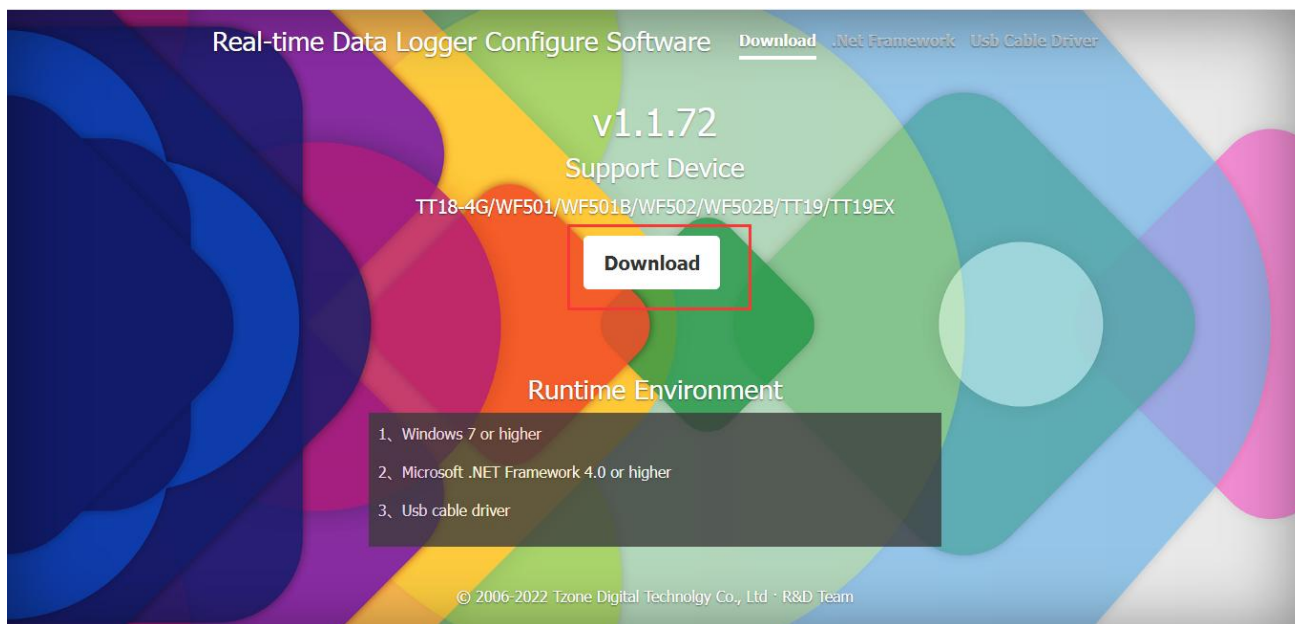
Step4: Device on, short press the "START" button before turning on the machine. If the LCD displays "OFF", it means the machine is turned off; At this time, press and hold the "START" button to turn on the machine, the "OK" light will be green, and the LCD will display the content, which means the machine is turned on, as shown in the figure below:



Note: If your device does not require configuration parameters, please ignore **steps 5, 6, 7, and 8**

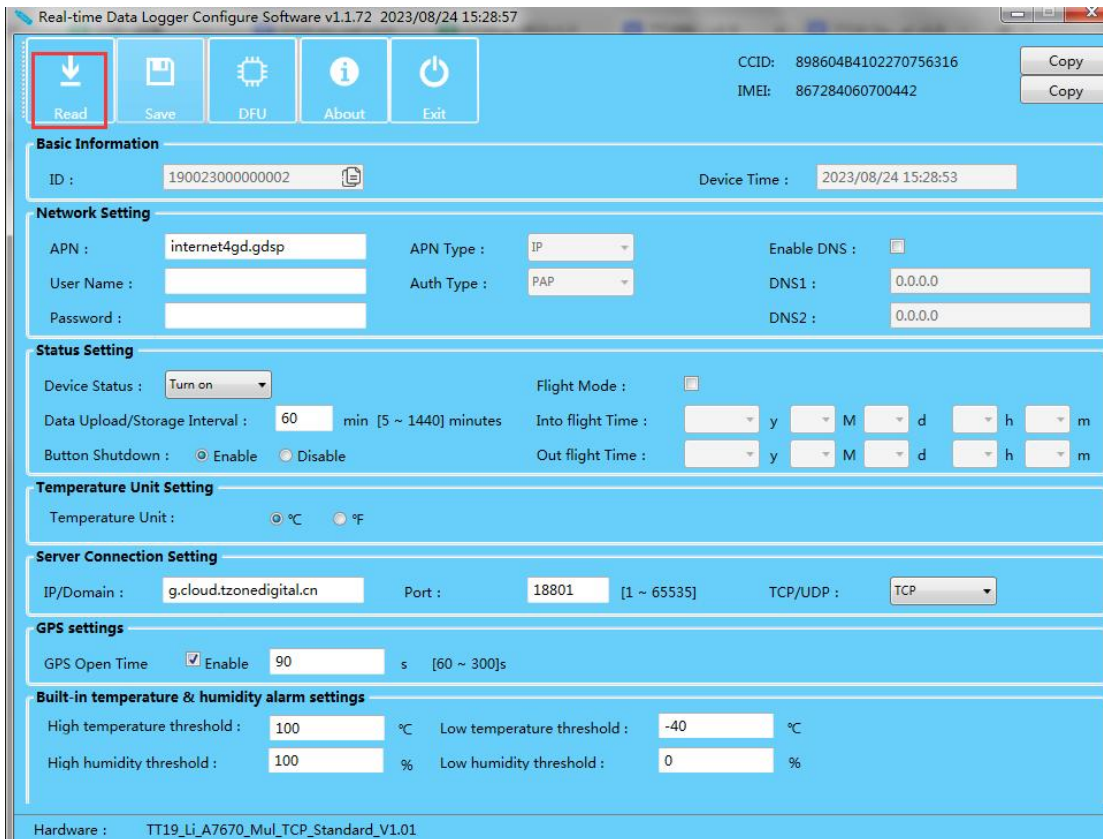
Step5: Download the configure software of TT19 from TZONE website:

<http://d.tzonedigital.com/Download.aspx?Type=TT19>

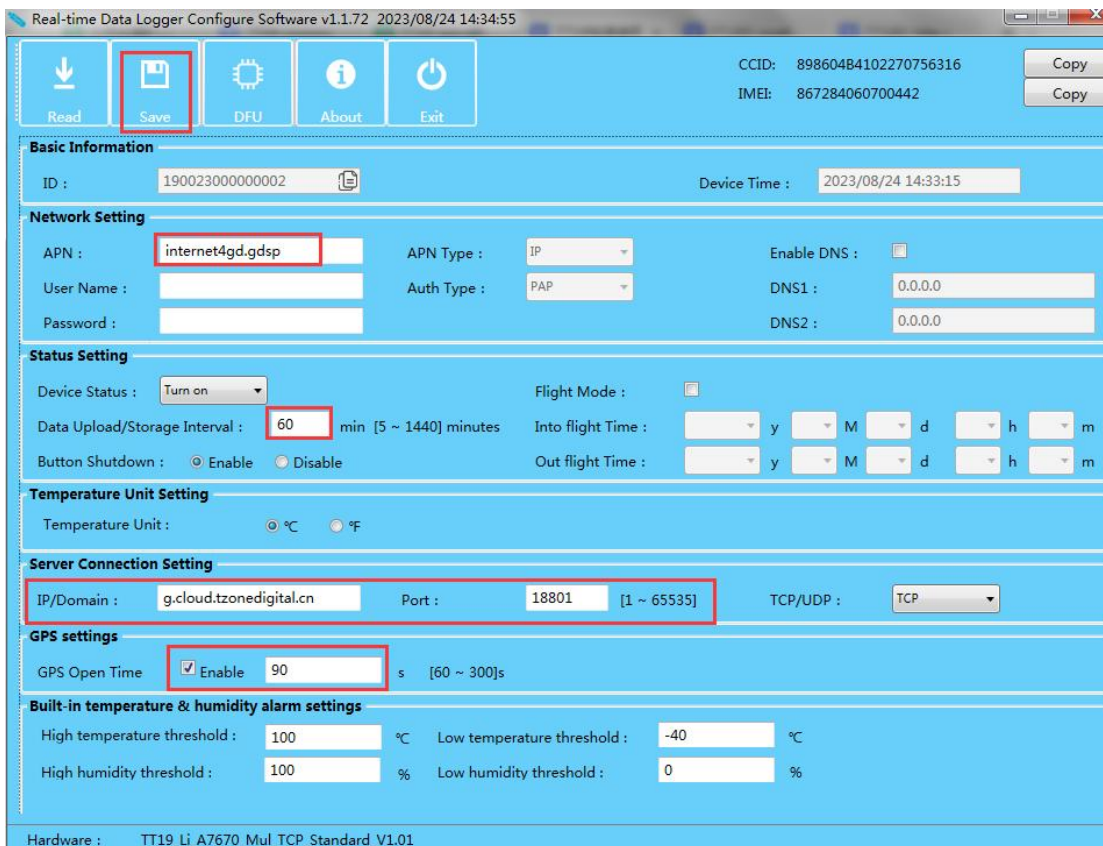


Step6: Connect the device to the computer by USB cable and click "Read" to read the device information .

Note:if the device cannot be read, please reconnect the USB cable and make sure there is a new disk, and then click "Read".



Step7: Set the APN of the SIM card, the platform IP address and port for uploading data, the sending interval, the GPS opening time and other information, and click "Save" after setting.

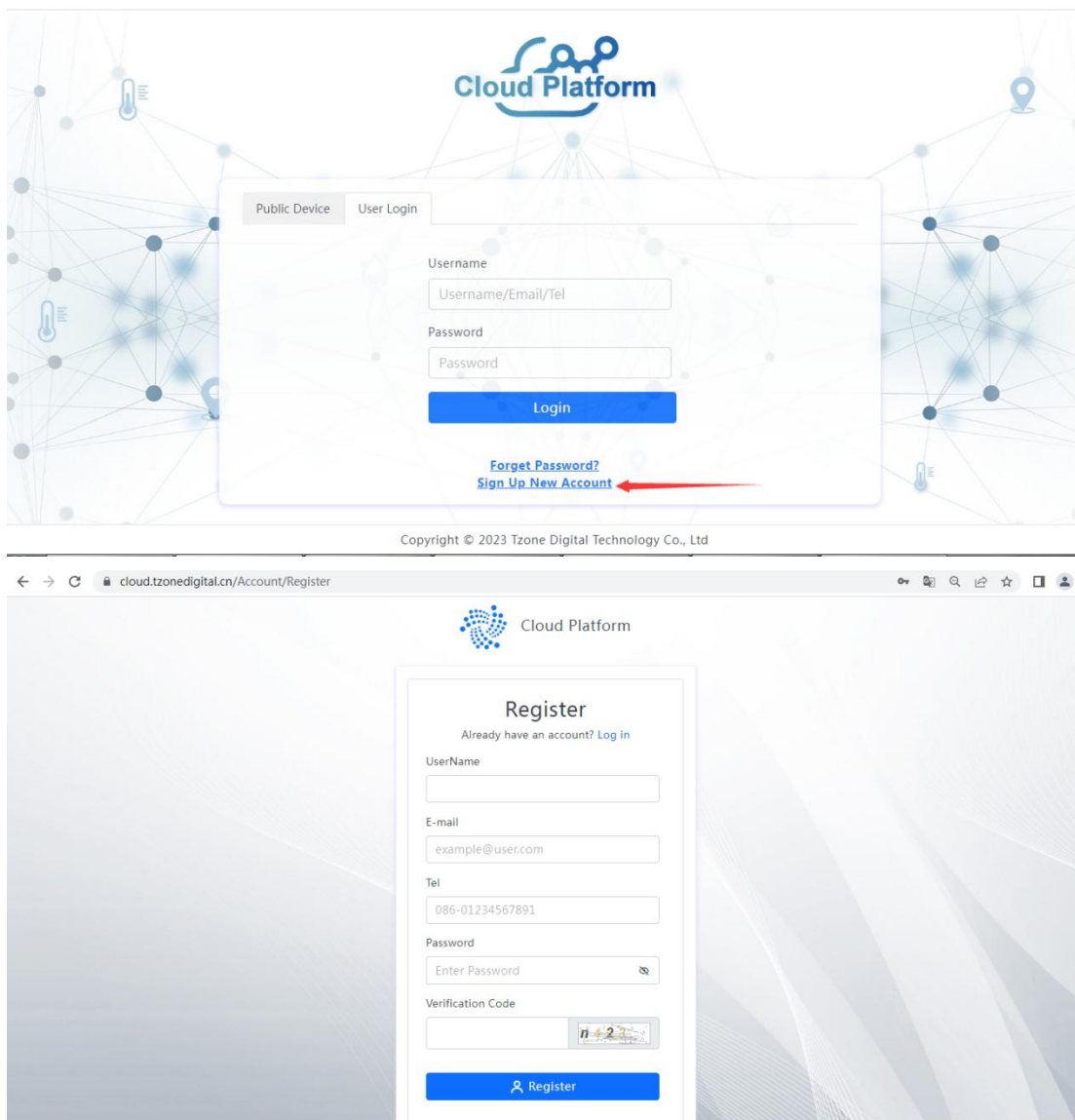


Step8: Close the configuration software after configuration, and unplug the USB cable.

Step9: Install the device at the temperature monitoring site and send the data.

Step10: Register an account on the TZONE cloud platform.

TZONE cloud platform Address: <http://cloud.tzonedigital.com/>



Step11: After registering an account, add the device IMEI to the account.

cloud.tzonedigital.cn/Console/Hardware/Device

Cloud Platform

Overview
Real-time Monitoring
Device Management
Report

MESSAGE CENTER
Alarm Message
Exception Information
Notification Message

ACCOUNTS AND SETTINGS
Alarm Settings
Service
Account ID
Personalized

Device | Device

Keywords:
Device Name/Device ID

#	Device Name	Device ID	Model	Group	CreateTime	Expiration	Condition	Operate
1	TT19	190023000000001	TT19	Default	2023/06/09 14:16:55	2023/09/07 14:16:55	Online	<input type="button" value="Refresh"/> <input type="button" value="Edit"/> <input type="button" value="Delete"/> <input type="button" value="More"/>

Copyright © 2023 Tzone Digital Technology Co., Ltd

Add

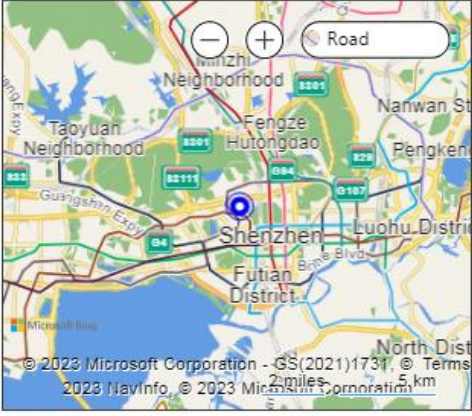
* Device Name:

* Device ID:

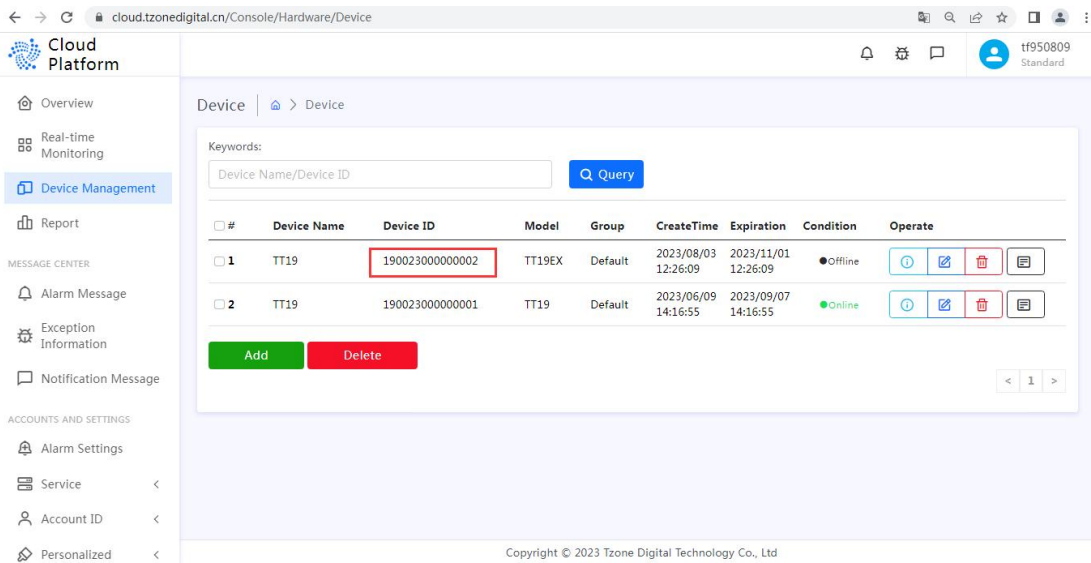
* Group:

Remark:

Device Address:

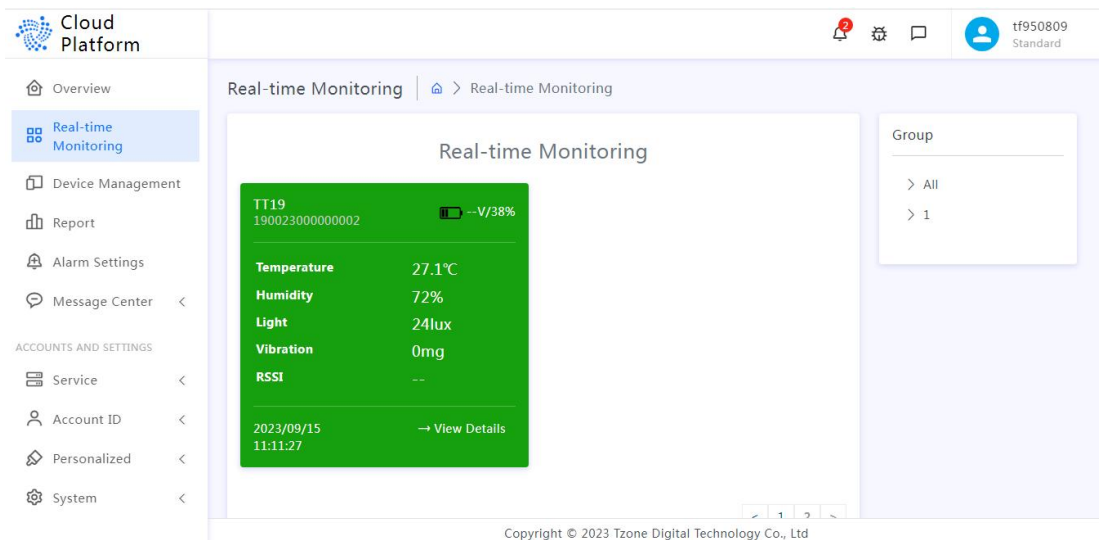


Note:
Drag the blue marker on the map to set the device address.



Step12: Query data.

Query method 1:



Query method 2:

Public Device User Login

190023000000002 Search →

Device ID : 190023000000002

Temperature 27.1°C	Humidity 72%	Light 24lux
Vibration 0mg	Battery 38%	

2023/09/15 11:11:27

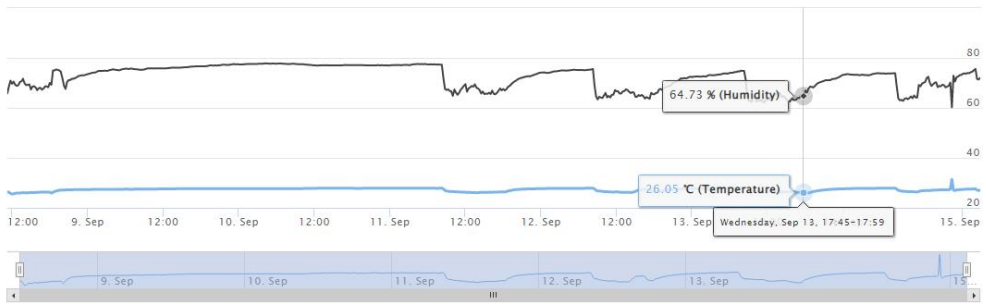
Chart List

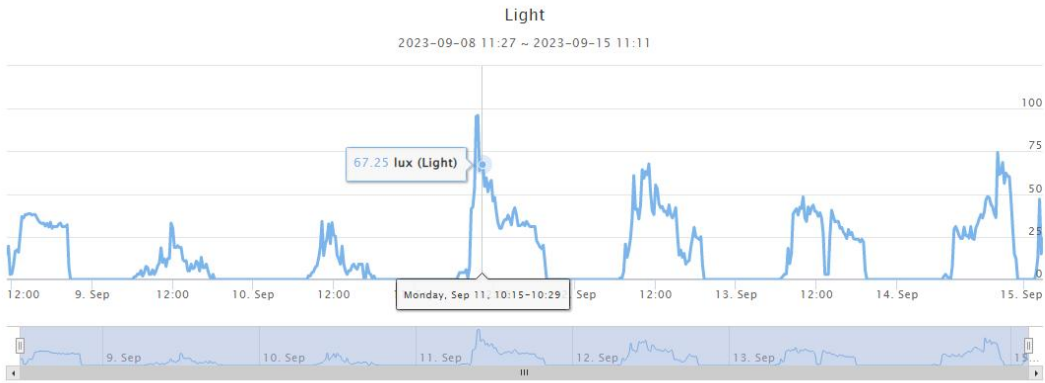
2023/09/08 11:29 2023/09/15 11:29 View Download

Chart

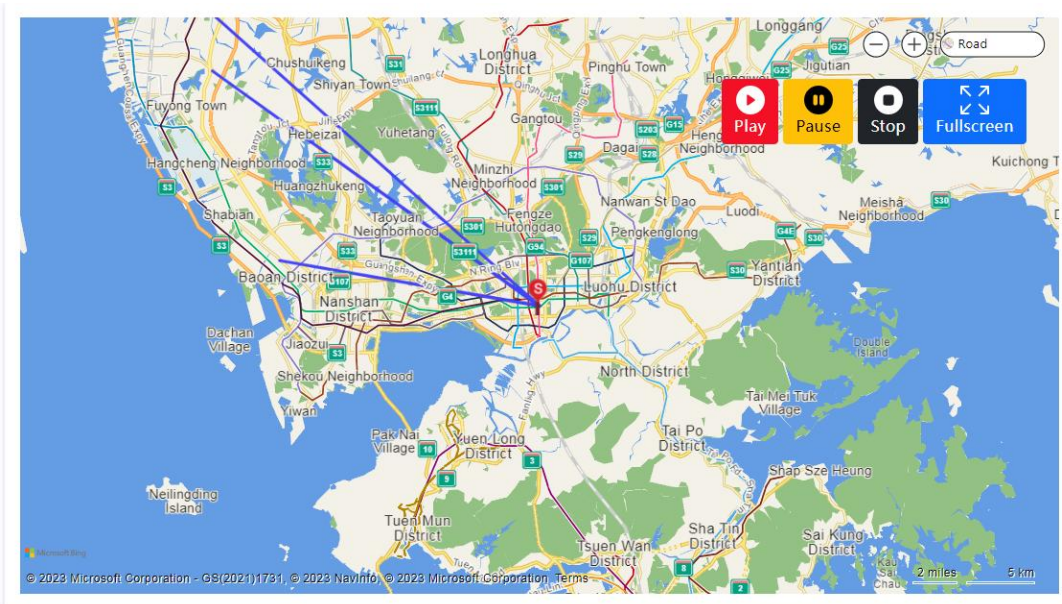
Chart

2023-09-08 11:27 ~ 2023-09-15 11:11





Tips: The query returns a maximum of 10000 data. If it exceeds, please change the time range.



Note: The configuration software version in the following pictures is only for display, and the actual

version will be updated and uploaded to our website from time to time:
<http://d.tzonedigital.com/>