

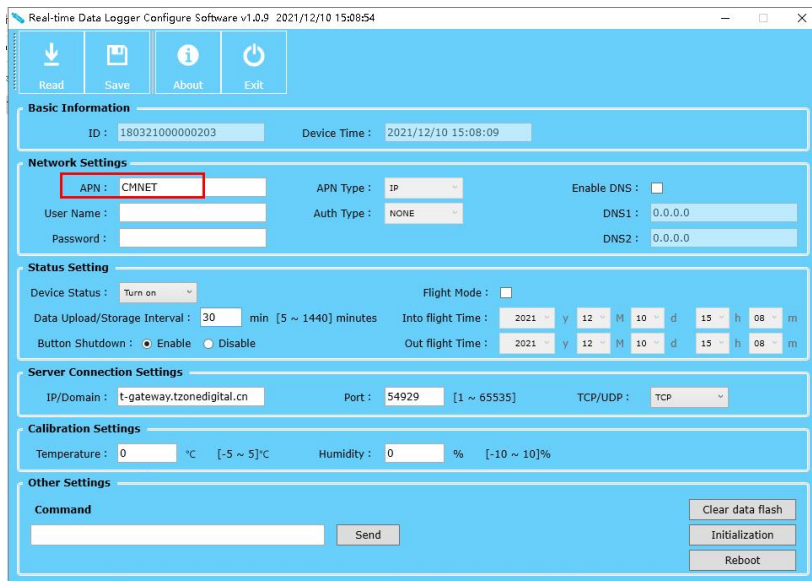
# TT18-4G-M Quick Setup Use Manual V2.2

Steps how to run the machine easily.



**Step1:** Unscrew the device

**Step2:** Install the 4G(NB/CAT-M1)/2G SIM card



**Step3:** Please check whether the SIM card needs to be set APN. Skip this item if no APN is required. If the APN needs to be set, connect the computer through the USB configuration cable and set the APN of the device



**Step4:** Press the button for 3 seconds, the device is running after the green light on for 5 seconds, and it will immediately send a data.

**Step5:** You can monitor the real-time temperature and humidity data on the web cloud platform, TT18 default every 30 minutes send a data to server, press the button shortly and then loose it.it will immediately send a data t server.

After a short press of the button, the device status light flashes as follows:

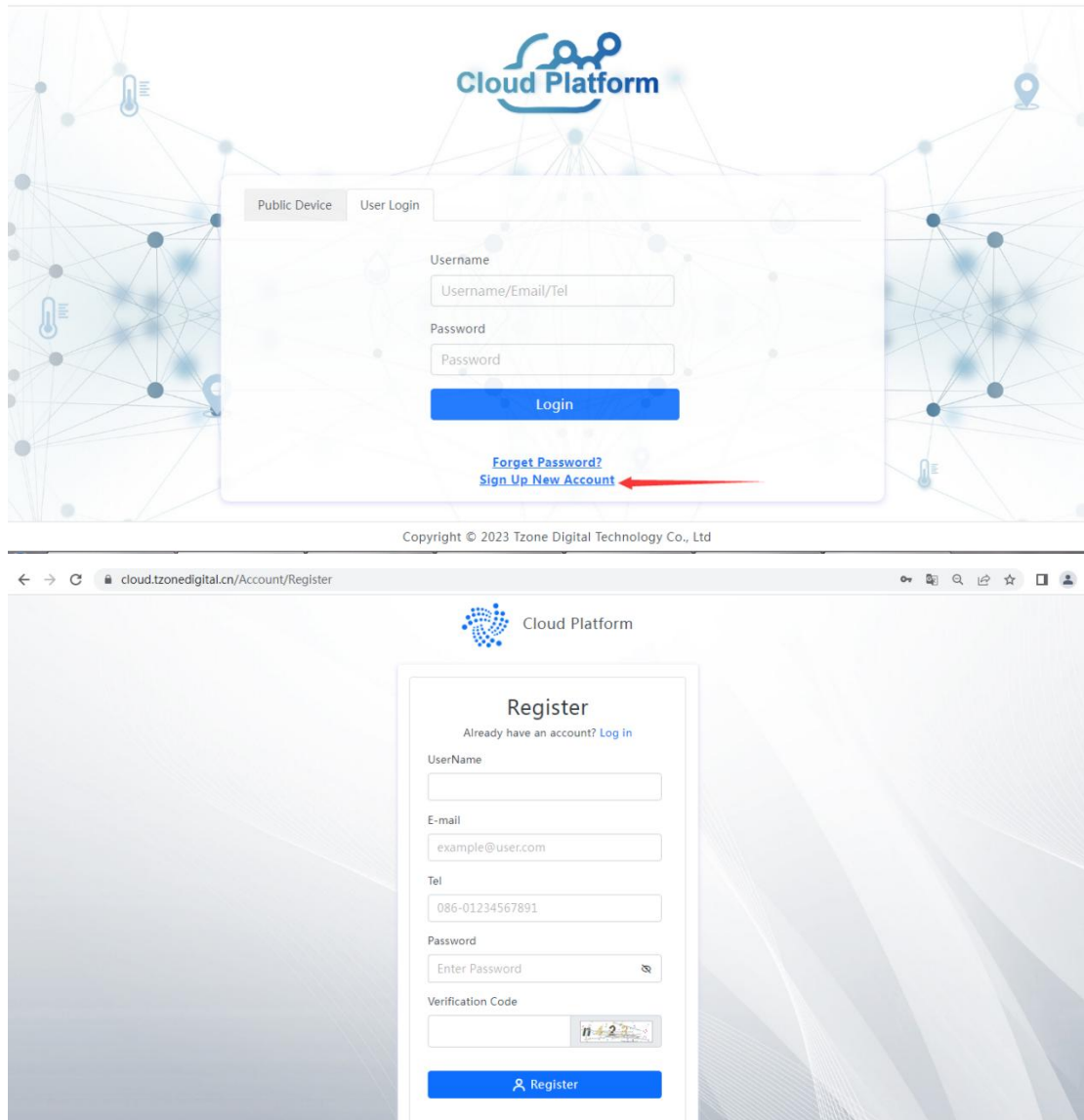
indicating the device status(Green+Red LED )		
Device LED status	Explanation	Priority
Green led quick flashing (on for 0.1 seconds and off for 0.1 seconds)	Working properly	1
Green led slow flashing (on for 1 seconds and off for 1 seconds)	Flight mode	2
Red led slow flashing (on for 1 seconds and off for 1 seconds)	Battery low voltage	3
Red led quick flashing (on for 0.1 seconds and off for 0.1 seconds)	Network anomalies	4
Off	Power OFF	5

### Step5: Platform data query

**TZONE cloud platform Address:** <http://cloud.tzonedigital.com/>

Please register an account and add your device to the platform. Then there will be real-time data on the platform after 5 mins once your device is running and short press of the button

## 5.1 Register and Login



## 5.2 Add device IMEI

cloud.tzonedigital.cn/Console/Hardware/Device

Cloud Platform

tf950809 Standard

Device Name/Device ID

#	Device Name	Device ID	Model	Group	CreateTime	Expiration	Condition	Operate
1	WF502B	502000000000002	WF502B	Default	2023/08/28 15:09:45	2023/11/26 15:09:45	Online	<input type="button" value="Refresh"/> <input type="button" value="Edit"/> <input type="button" value="Delete"/> <input type="button" value="Info"/>
2	WF501	500122000000271	WF501	Default	2023/08/28 14:32:04	2023/11/26 14:32:04	Online	<input type="button" value="Refresh"/> <input type="button" value="Edit"/> <input type="button" value="Delete"/> <input type="button" value="Info"/>
3	WF501	500122000000270	WF501	1	2023/08/28 14:31:47	2023/11/26 14:31:47	Online	<input type="button" value="Refresh"/> <input type="button" value="Edit"/> <input type="button" value="Delete"/> <input type="button" value="Info"/>
4	WF502B	502000000000001	WF502B	1	2023/08/22 15:56:32	2023/11/20 15:56:32	Online	<input type="button" value="Refresh"/> <input type="button" value="Edit"/> <input type="button" value="Delete"/> <input type="button" value="Info"/>
5	TT18-4G-M	180320230309001	TT18-4G-M	1	2023/08/09 09:44:22	2023/11/07 09:44:22	Offline	<input type="button" value="Refresh"/> <input type="button" value="Edit"/> <input type="button" value="Delete"/> <input type="button" value="Info"/>
6	TT19	190023000000002	TT19	Default	2023/08/03 12:26:09	2023/11/01 12:26:09	Offline	<input type="button" value="Refresh"/> <input type="button" value="Edit"/> <input type="button" value="Delete"/> <input type="button" value="Info"/>

< 1 >

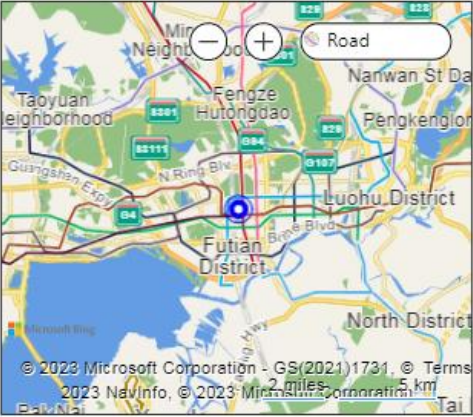
### Add

\* Device Name:

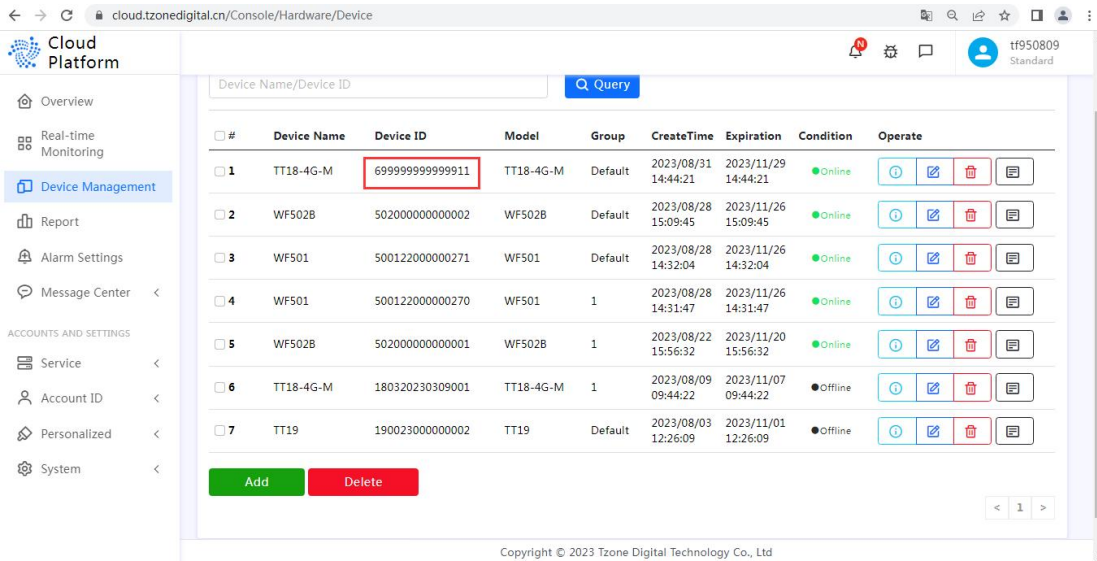
\* Device ID:

\* Group:

Remark:

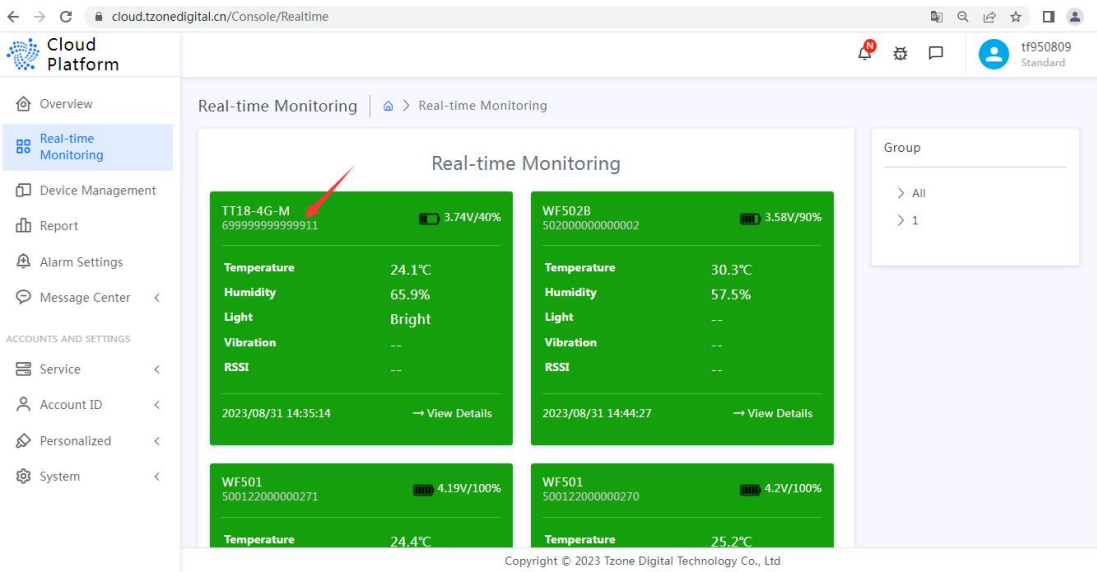
Device Address:   


Note:  
Drag the blue marker on the map to set the device address.



## 5.3 Query data

### Query method 1:



### Query method 2:

